

# EK6 - Controller

The EK6-Access Control Controller is a combined keypad, proximity reader and door controller. It can be used as a standalone system or connected to an access control system.

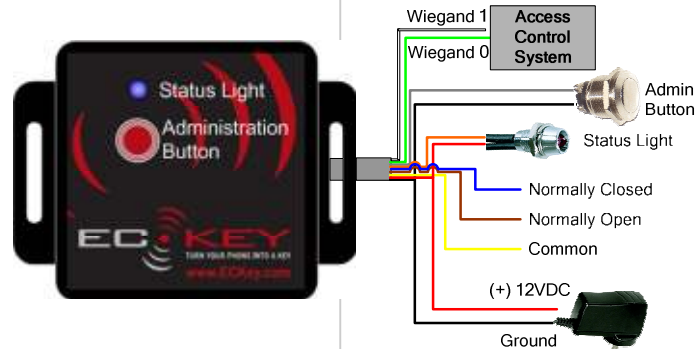
## Applications

There are a number of applications for the EK6-Access Controller including all the examples of the EK2,3,4,5 and the following.

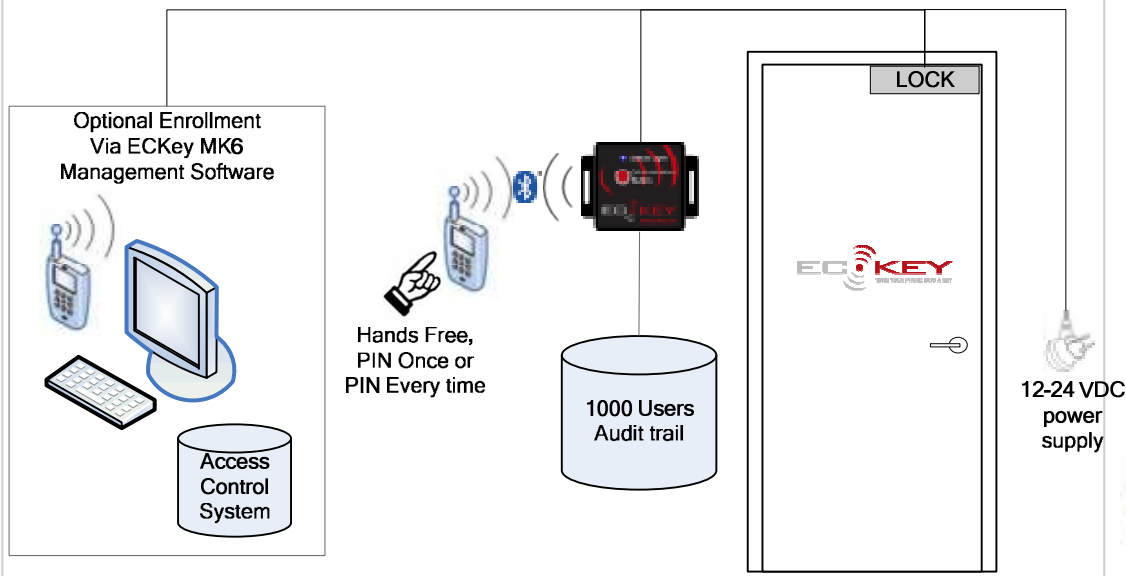
- Standalone controller with event logged to the access control system via Wiegand.
- Long range proximity reader for a gate so it opens hands free for registered phones.
- Long range keypad for a gate so you can type the PIN on the keypad of a phone without having to wind down the window.
- Wiegand connected to the access control system and relay connected to a security light and video camera to trigger recording.

## Features

- All features of the EK2,3,4 and 5
- Hands free, PIN once or PIN every time virtual keypad options
- Fixed or device specific PIN numbers
- When using PIN once or PIN every time 1000 users can be enrolled. There are unlimited users for the No PIN option.
- Range configurable from 1-10m (3 to 30feet) making it suitable as a long range prox reader
- Automatic or restricted cell phone enrolment.
- Set the range of virtual Wiegand card numbers and length at 26 or 48 bit
- Altered security level based on time of day. For example hand free access during office hours, PIN required after hours.
- Send virtual Wiegand card number when in range automatically
- Send virtual Wiegand card number when PIN entered
- Device specific PIN or ECKey EK6 reader specific PIN
- Relay triggering for external buzzer, light indicator or other system
- All configuration options editable from PC software or via Bluetooth file transfer from the phone.
- Software and firmware upgrades
- Access to online support knowledge base



**MK6 MANAGEMENT TOOLKIT**



**EK6-CONTROLLER**